

£787,500

Westbury Lodge Close, Pinner, HA5



- 3 Bedroom Town House
- End of Terrace
- Immaculate Presentation
- 2 Reception Rooms
- Ground Floor WC
- En-Suite Bathroom
- Double Glazing
- Integral Garage
- Off Street Parking
- South Facing Garden

Situated in a sought after Close and within walking distance of West Lodge Primary School, is this beautifully presented 3 bedroom, end of terrace town house. Lovingly refurbished to a high standard by the current owner, the spacious accommodation is split over three floors and affords stylish features throughout. Tastefully decorated and finished with a neutral palette, the property benefits from an integral garage, ground floor WC, utility room, en-suite to the master bedroom and an easy to manage, south facing rear garden.

Measuring over 1500 sq ft internally, the impressive 27' 10" x 12' 11" reception / dining room and 19' 4" x 13' 9" family room would perfectly suit those looking for generous living accommodation.

Three well-proportioned bedrooms and family bathroom to the second floor completes the layout.



Westbury Lodge Close, Pinner, HA5

Reception / Dining Room
27'10" x 12'11" (8.48m x 3.94m)

Kitchen / Breakfast Room
14'2" x 8'7" (4.32m x 2.62m)

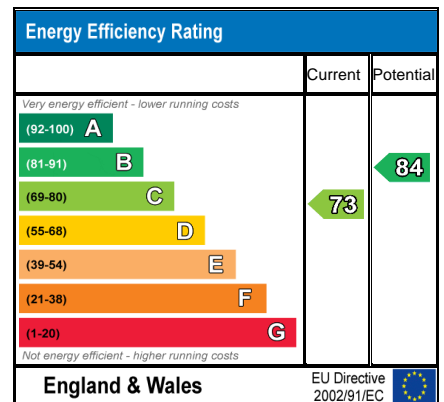
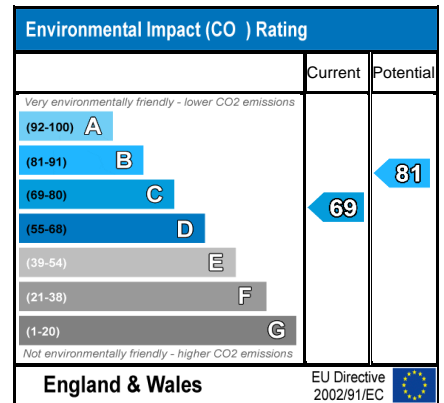
Study / Family Room
19'4" x 13'9" (5.89m x 4.19m)

Utility Room
10'1" x 6'9" (3.07m x 2.06m)

Bedroom
14'1" x 9'11" (4.29m x 3.02m)

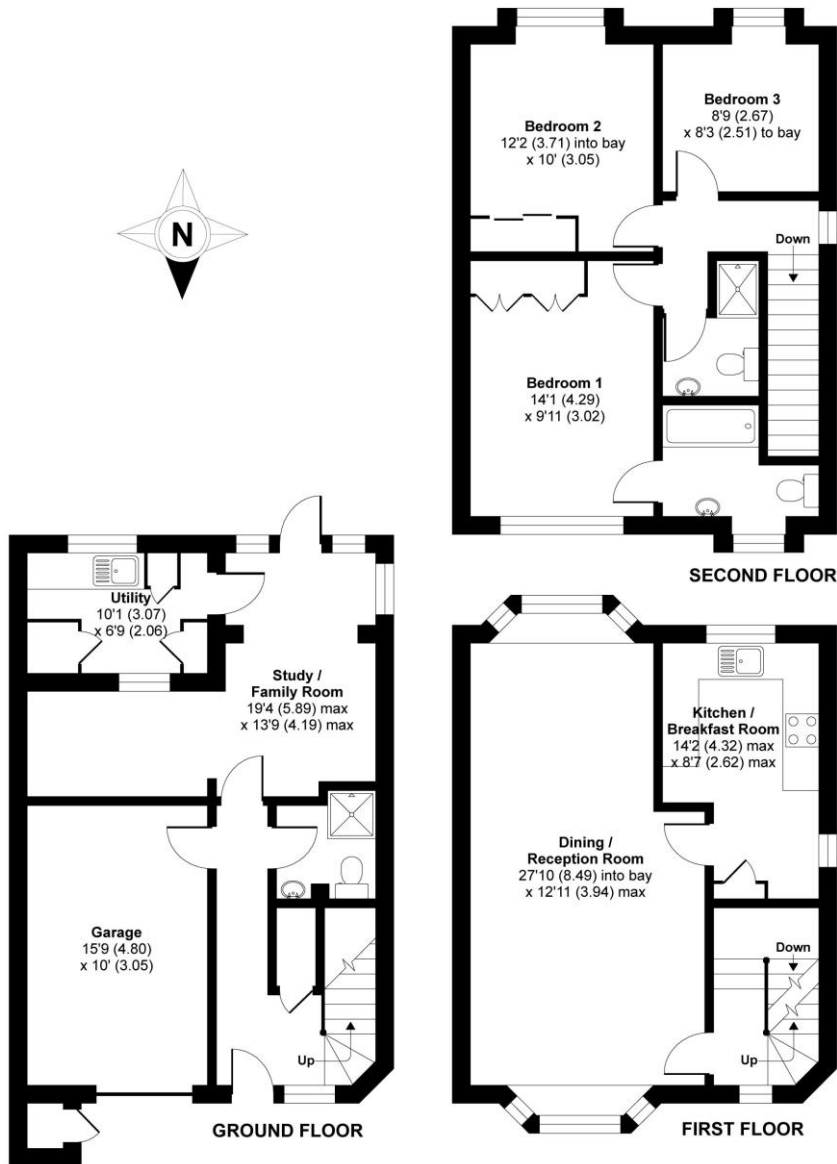
Bedroom
12'2" x 10'0" (3.71m x 3.05m)

Bedroom
8'9" x 8'3" (2.67m x 2.51m)



Westbury Lodge Close, Pinner, HA5

APPROX. GROSS INTERNAL FLOOR AREA 1579 SQ FT 146.6 SQ METRES



Whilst every attempt has been made to ensure the accuracy of the floor plan contained here, measurements of doors, windows and rooms are approximate and no responsibility is taken for any error, omission or misstatement. These plans are for representation purposes only as defined by RICS Code of Measuring Practice and should be used as such by any prospective purchaser. Specifically no guarantee is given on the total square footage of the property if quoted on this plan. Any figure given is for initial guidance only and should not be relied on as a basis of valuation.

Copyright nichecom.co.uk 2017 Produced for Chalk Street Estates Limited REF : 220273

VIEWING BY APPOINTMENT WITH AGENTS CHALK STREET ESTATES

63 Butts Green Road, Emerson Park, Hornchurch, Essex, RM11 2JS T: E: hello@chalkstreet.co.uk W: www.chalkstreet.co.uk

General: While we endeavour to make our sales particulars fair, accurate and reliable, they are only a general guide to the property and, accordingly, if there is any point which is of particular importance to you, please contact the office and we will be pleased to check the position for you, especially if you are contemplating travelling some distance to view the property.

Measurements: These approximate room sizes are only intended as general guidance. You must verify the dimensions carefully before ordering carpets or any built-in furniture.

Services: Please note we have not tested the services or any of the equipment or appliances in this property, accordingly we strongly advise prospective buyers to commission their own survey or service reports before finalizing their offer to purchase.

THESE PARTICULARS ARE ISSUED IN GOOD FAITH BUT DO NOT CONSTITUTE REPRESENTATIONS OF FACT OR FORM PART OF ANY OFFER OR CONTRACT. THE MATTERS REFERRED TO IN THESE PARTICULARS SHOULD BE INDEPENDENTLY VERIFIED BY PROSPECTIVE BUYERS OR TENANTS. NEITHER CHALK STREET ESTATES NOR ANY OF ITS EMPLOYEES OR AGENTS HAS ANY AUTHORITY TO MAKE OR GIVE ANY REPRESENTATION OR WARRANTY WHATEVER IN RELATION TO THIS PROPERTY.

YOUR HOME IS AT RISK IF YOU DO NOT KEEP UP REPAYMENTS ON A MORTGAGE OR OTHER LOAN SECURED ON IT.

Written quotations available on request. All loans secured on property. Life assurance is usually required.