





## Corbets Tey Road, Upminster, RM14

Offers Over £900,000

🛏 5 🚿 2 🚗 2





**\*VIDEO TOUR ATTACHED\***

Suitably located within close proximity to a number of Upminster's popular schools, under a mile from Upminster Station and just a short stroll to Upminster Park and the town centre, is this five-bedroom semi-detached house.

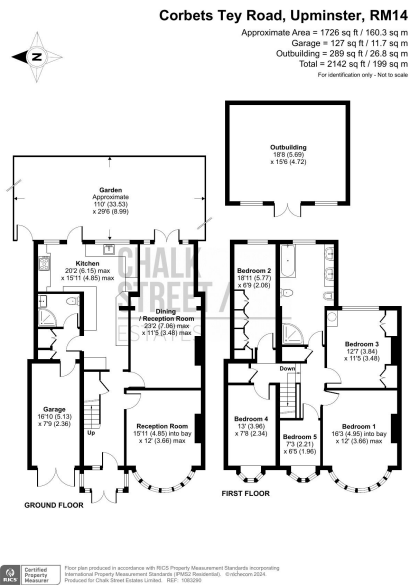
Amassing over 1,700 sq. ft. of living accommodation, the family home boasts a large reception room, separate dining room, large kitchen, utility room, ground floor shower room, five rooms and a large family bathroom.

Upon entering the home, via the enclosed porch, you are greeted with a bright and welcoming hallway which provides access to all the ground floor living accommodation and has stairs rising to the first floor.

Situated at the front of the home, drawing light from the large bay window to the front elevation, is the lounge. Centred around a beautiful fireplace, further features include deep skirtings, decorative cornice and a lovely ceiling rose.

Towards the rear of the home, measuring 23'2 x 11'5, is the through lounge. Decorated with neutral tones and flooded with natural light, from the French patio doors opening onto the rear, further features include deep skirting, decorative cornice and ceiling rose. The room also provides ample space for a dining table and chairs.





- Five Bedrooms
- Semi-Detached House
- Beautifully Presented Throughout
- Two Large Reception Rooms
- Ground Floor Shower Room Plus Family Bathroom
- Off Street Parking With Side Gate Access
- Integral Garage
- 110' Rear Garden
- Large Garden Outbuilding
- Close Proximity To Upminster Station

