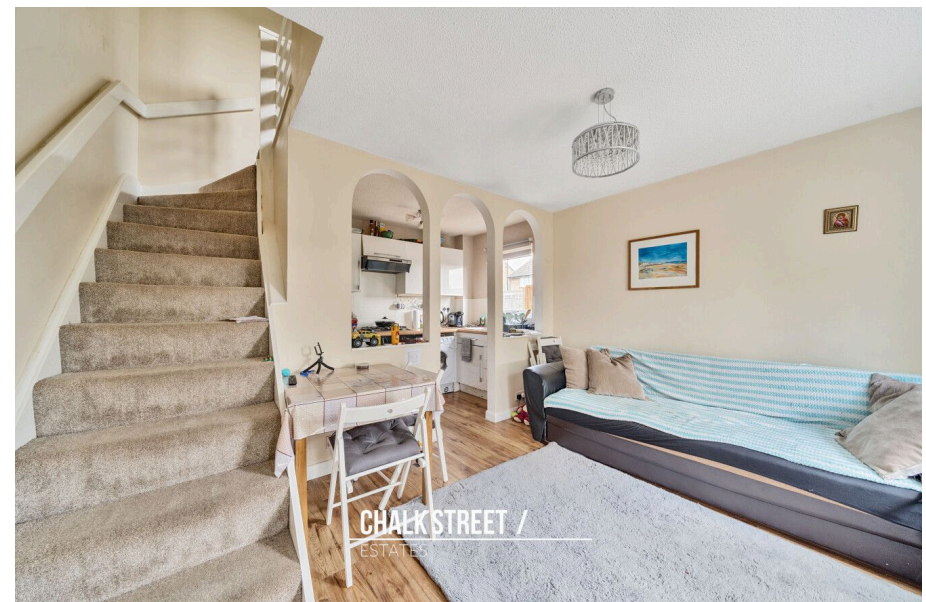
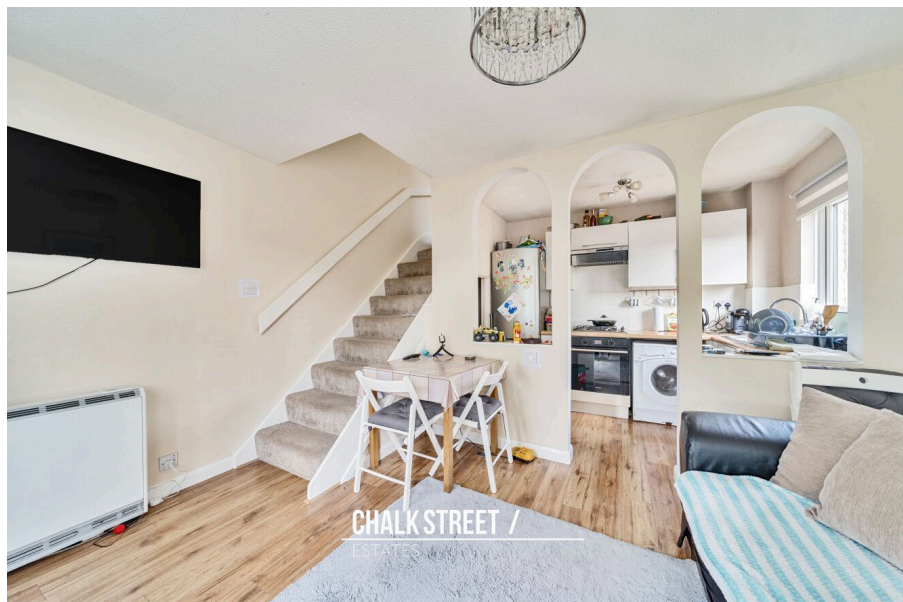




Dewey Path, Hornchurch

Fixed Price £300,000

1 1 1



Offered for sale with the added advantage of no onward chain, considered an ideal first purchase, situated within a quiet residential turning, mere walking distance to Hornchurch Country Park and within close proximity to local shops, schools and amenities is this beautifully presented one bedroom terraced house.

Upon entering the home, you are then greeted with the reception room. Nicely presented with modern tones and laminate flooring underfoot, the dual aspect room measures 12'9 x 9'10. From here, stairs rise to the first floor.

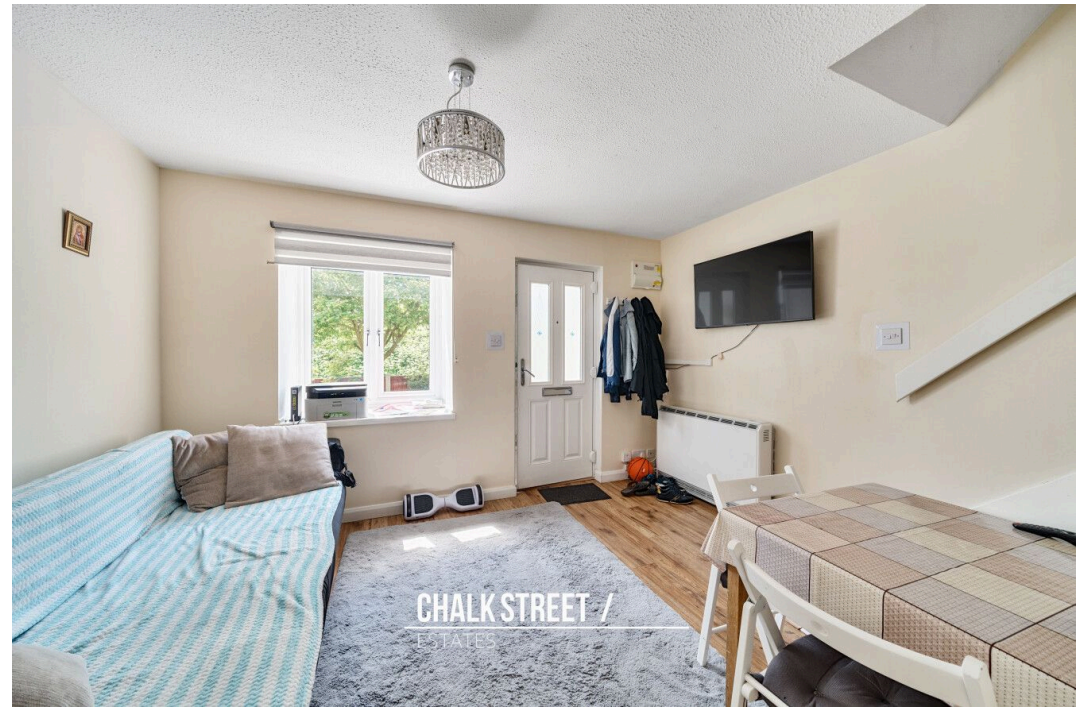
An archway opens through to the kitchen which comprises numerous wall and base units, worktops to two sides and room for essential appliances. Accessed off the kitchen is the handy understairs storage cupboard.

Heading upstairs, the well presented bedroom measures 9'2 x 9'2 and enjoys fitted wardrobes.

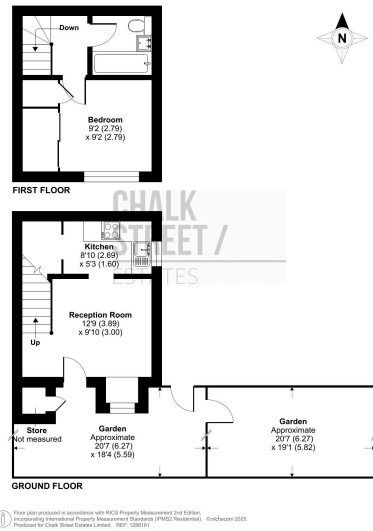
Completing the internal layout is the stylish bathroom.

To the front there is a low maintenance front garden, private rear garden and an allocated parking space.

Viewing is highly recommended to fully appreciate this lovely family home.



Dewey Path, Hornchurch, RM12
 Approximate Area = 402 sq ft / 37.3 sq m (Excluding store)
 For identification only - Not to scale



- No Onward Chain

