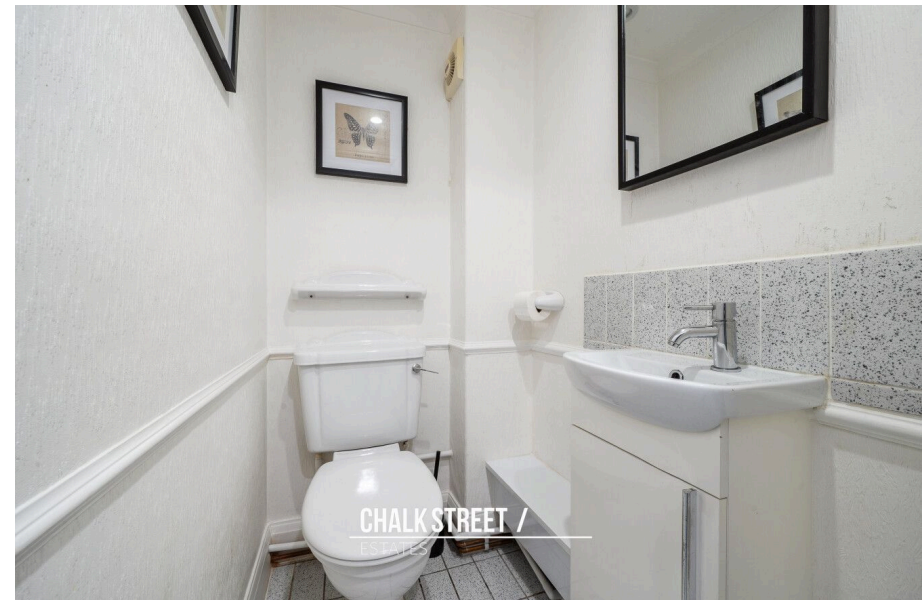




Rosemary Avenue, Romford, RM1

Offers Over £600,000

3 1 1



Positioned within close proximity to Gidea Park and Romford Elizabeth Line stations, is this three bedroom semi-detached house. For those looking for potential to add a fourth bedroom, the property also holds a Certificate of Lawfulness for a hip to gable, loft conversion with rear dormer with Juliette balcony, roof lights to front & obscured glazed non opening window in gable wall (D0388.24)

Upon entering the home, via the enclosed porch, you are greeted with a welcoming entrance hallway with stairs rising to the first floor.

Spanning the right side of the home, is the spacious through lounge which measures an impressive 29'2 x 12' and provides adequate space for a large dining table and chairs. The room is flooded with natural light from the large bay window to the front elevation and French patio doors to the rear. Centred around a feature fireplace, further features include deep skirtings and decorative cornice.

The kitchen / diner comprises numerous wall and base units, ample worktops and room for essential appliances. A sliding door opens onto the bright and airy conservatory which overlooks the rear garden.

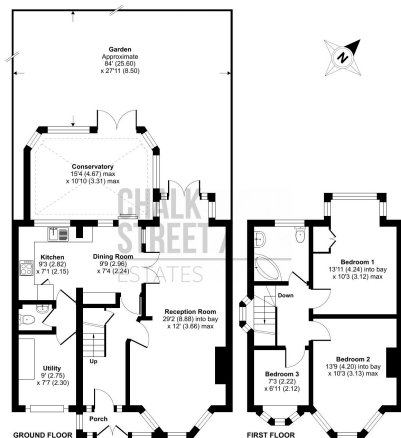
Positioned off the kitchen, within the converted garage, is the handy utility and separate W/C.

Heading upstairs, there are two large double bedrooms and a further single. All three rooms are well presented and enjoy large bay windows which flood the room with natural light.



Rosemary Avenue, Romford, RM1

Approximate Area = 1278 sq ft / 118.7 sq m
For identification only - Not to scale



© Floor plan produced in accordance with RICS Property Measurement 2nd Edition, incorporating International Property Measurement Standards (IPMS). Produced by Chalk Street Estates Limited, 1907, 1202179

- Three Bedrooms
- Semi-Detached House
- Well Presented Throughout
- Spacious Reception Room
- Kitchen With Separate Utility Room
- Conservatory
- Off Street Parking
- 84' Rear Garden
- 0.8 Miles From Gidea Park Elizabeth Line Station
- 0.9 Miles From Romford Elizabeth Line Station

