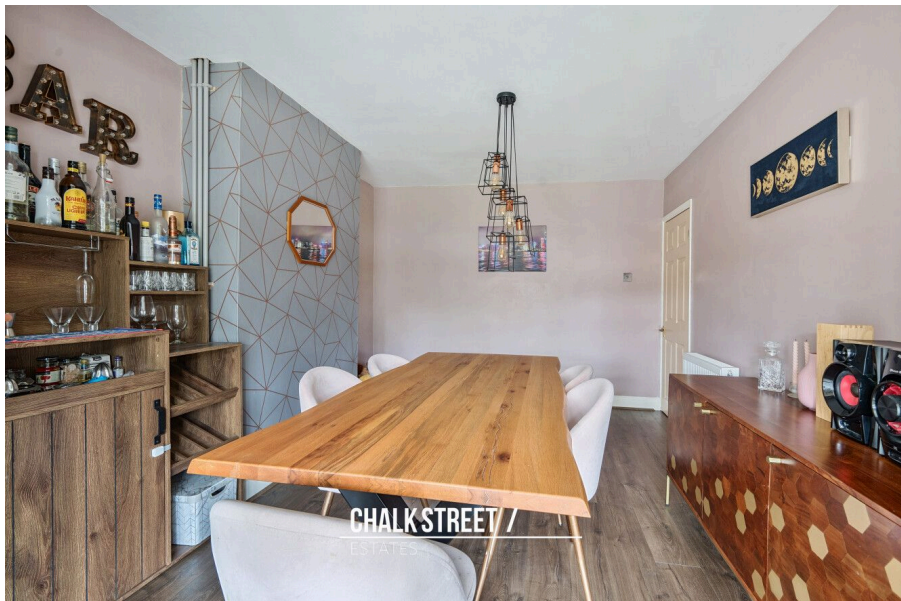




Maylands Avenue, Hornchurch, RM12

Offers Over £475,000

3 1 1



Situated just 0.3 miles from Elm Park Underground Station, 0.5 miles from Ofsted 'Outstanding Rated' Scotts Primary School and walking distance to Elm Park Shopping Broadway, is this three bedroom terraced house. The property is also offered for sale with the added advantage of a completed onward chain.

Upon entering the home, you are greeted with a welcoming entrance hallway with stairs rising to the first floor.

Drawing light from the large window to the front elevation the large reception room is beautifully presented with modern tones and measures 13'1 x 11'3.

At the heart of the home is the second reception room is tastefully decorated and flows seamlessly through to the kitchen / dining room which spans the rear of the home.

The kitchen comprises numerous wall and base units, worktops to three sides and room for essential appliances. Positioned off such is the utility room which provides additional worktop space and storage units.

Upstairs there are two large bedrooms and a generously sized single bedroom. All three bedrooms are well presented with the largest measuring 13'2 x 10'4.

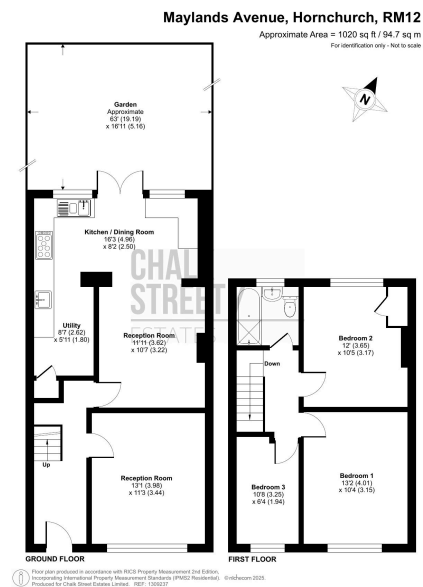
Completing the internal layout is the family bathroom.

Externally, to the front there is off street parking.

The rear garden measures 63' and is predominantly laid to lawn. At the base of the garden there is an additional patio area ideal for relaxing on summer evenings.

Viewing is highly recommended to fully appreciate all this wonderful home has to offer.





- Three Bedrooms
- Terraced House
- Well Presented Throughout
- Two Reception Rooms
- Off Street Parking
- 63' Rear Garden
- Walking Distance To Local Shops
- 0.6 Miles from Ofsted 'Outstanding Rated' Scotts Primary School
- 0.4 Miles from Elm Park Primary School
- 0.3 Miles from Elm Park Underground Station

