



Lichfield Terrace, Upminster, RM14

£1,595 pcm

Ideally located within close proximity to Ofsted 'Outstanding' rated Hall Mead School, within close proximity to local shops and amenities, is this two bedroom first floor maisonette.

The property boasts a modern open-plan kitchen /dining /living room, two large bedrooms and a well presented bathroom. Other benefits include off-street parking.

Available immediately.

Holding Deposit: £368.07

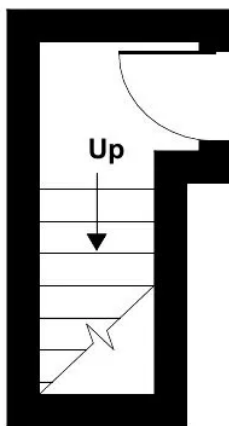
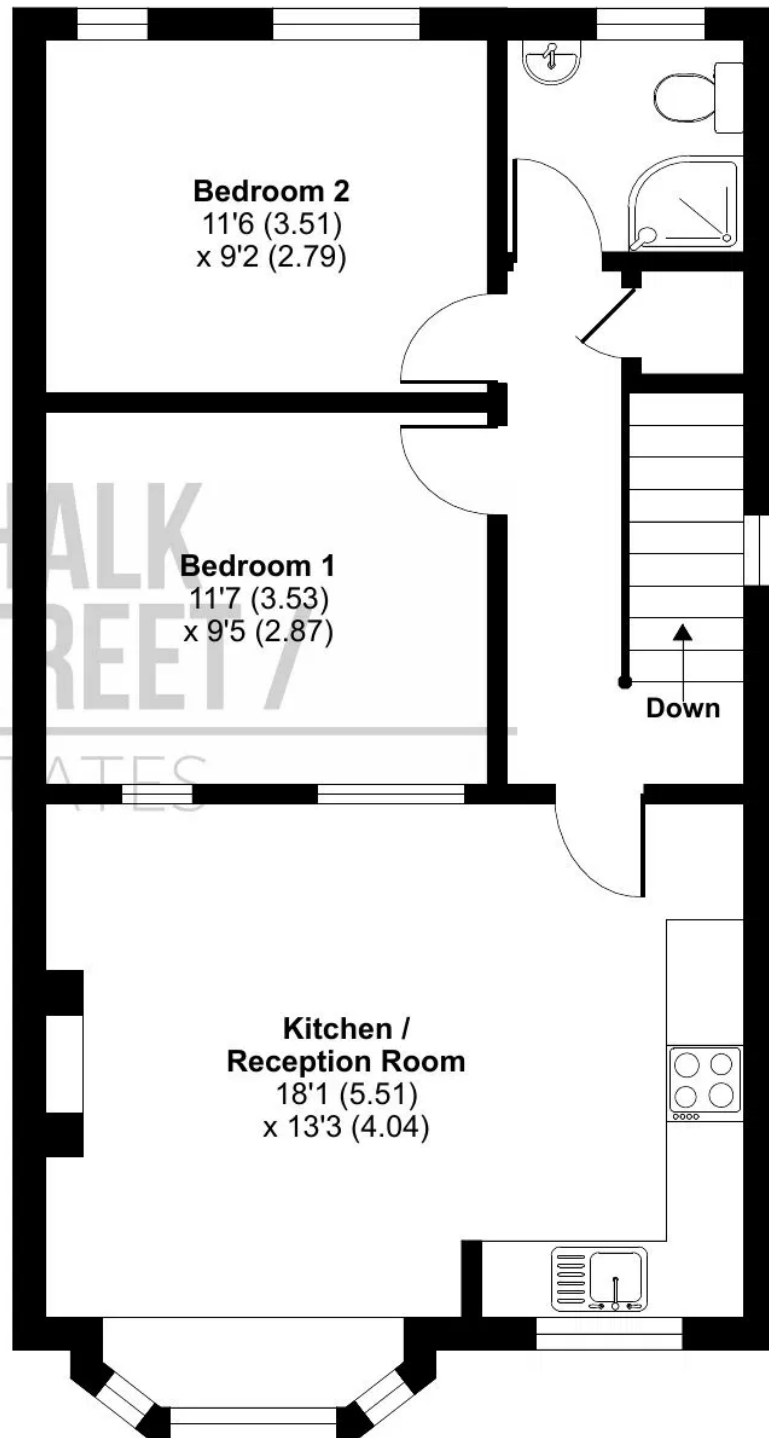
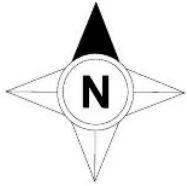
Security Deposit (5 weeks' rent): £1,840.38

Bedrooms: 2 | Bathrooms: 1 | Receptions: 1

Lichfield Terrace, Upminster, RM14

Approximate Area = 650 sq ft / 60.4 sq m

For identification only - Not to scale



GROUND FLOOR

FIRST FLOOR





CHALK STREET /
ESTATES



CHALK STREET /
ESTATES



CHALK STREET /
ESTATES



CHALK STREET /
ESTATES



CHALK STREET /
ESTATES