



CHALK STREET /

**Cromer Road, Hornchurch, RM11**

Guide Price **£775,000 - £800,000**

**Bedrooms: 4 | Bathrooms: 2 | Receptions: 2**

Offered for sale with the added advantage of no onward chain, perfectly positioned for growing families, this beautifully presented four-bedroom, end-of-terrace house offers an abundance of space and family-friendly features. Ideally located just 0.2 miles from Emerson Park Station, within walking distance of Hornchurch Town Centre, and a mere 0.2 miles from the Ofsted 'Outstanding' Towers Infant School, this home truly combines convenience with quality education.

Boasting a generous 1441 sq ft, the ground floor has been thoughtfully extended to provide extensive and flexible living accommodation crucial for family life. This includes a bright and spacious kitchen/dining/family room, forming the heart of the home, alongside a separate reception room perfect for quiet evenings. Additionally, a versatile study/playroom offers an ideal space for homework, hobbies, or children's activities. A convenient utility room and a ground floor W/C further enhance the practicalities of busy family living.

The stunning kitchen is a true highlight of this home, designed not just for cooking but for communal family gatherings and entertaining.

Heading upstairs, you will find four well-proportioned bedrooms, providing comfortable private spaces for every family member. The master bedroom benefits from its own en-suite facilities, offering a peaceful retreat, while the remaining bedrooms are adequately sized and share a stylish family bathroom, ensuring morning routines run smoothly.

Externally, the property benefits from ample off-street parking, a valuable asset for family vehicles. Side gate access leads to the 41' rear garden, offering a secure and inviting outdoor space for children to play and for family relaxation.

Viewing is highly recommended to fully appreciate how this fantastic family home meets the needs of a modern growing family.

*In compliance with The Money Laundering Regulations 2017, we are legally obligated to verify the identity of all prospective purchasers. This process requires the review of valid photographic identification and an official proof of address.*

*Should your offer on a property marketed by Chalk Street Estates be accepted, you will be required to complete identity verification through our secure third-party provider, Blinc UK. A non-refundable fee of £15 per purchaser is payable in advance of the verification checks.*

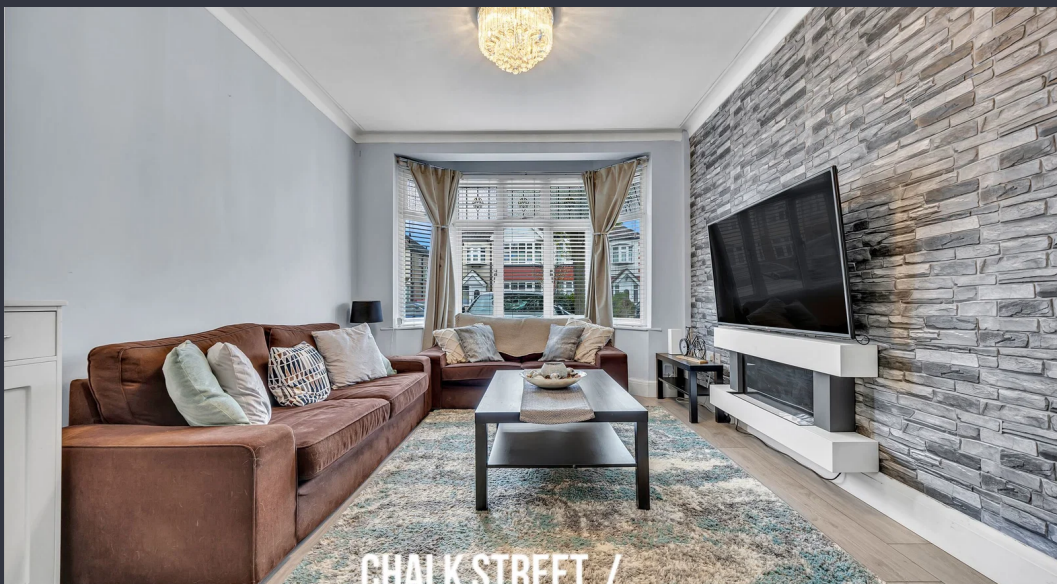
*Please note that a sale cannot be formally agreed, and a memorandum of sale cannot be issued, until all parties have provided valid identification and the verification process has been successfully completed.*





- No Onward Chain
- Four Bedroom End of Terrace House
- Beautifully Presented Throughout
- Three Reception Areas
- Stunning Kitchen
- Master Bedroom With En-Suite
- Stylish Family Bathroom
- Off Street Parking
- 41' Rear Garden With Side Access
- 0.2 Miles From Ofsted 'Outstanding' Towers Infant School







CHALK STREET /  
ESTATES



CHALK STREET /  
ESTATES



CHALK STREET /  
ESTATES



CHALK STREET /  
ESTATES



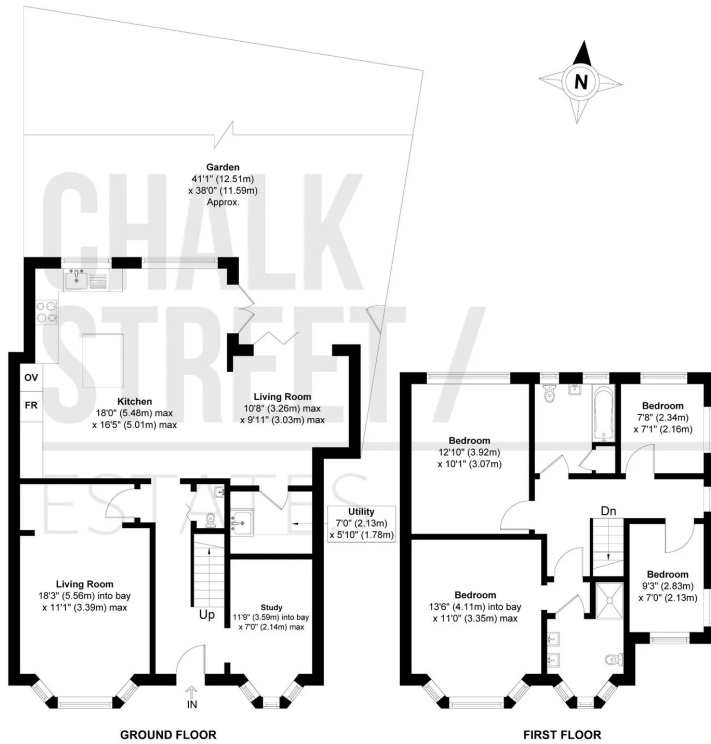
**Cromer Rd, Hornchurch RM11**

Ground = 76.32 sq m / 822 sq ft

First = 57.47 sq m / 619 sq ft

Total = 133.79 sq m / 1441 sq ft

For Identification only - Not to Scale



Floor plan produced in accordance with RICS Property Measurement 2nd Edition. Incorporating International Property Measurement Standards (IPMS2 Residential).

Produced for © Chalk Street Estates Limited.



Energy Efficiency Rating		Current	Potential
Very energy efficient - lower running costs			
(92 plus) <b>A</b>			
(81-91) <b>B</b>			
(69-80) <b>C</b>			83
(55-68) <b>D</b>		61	
(39-54) <b>E</b>			
(21-38) <b>F</b>			
(1-20) <b>G</b>			
Not energy efficient - higher running costs			
<b>England &amp; Wales</b>		EU Directive 2002/91/EC	

**Chalk Street Estates - Sales**

63-65 Station Lane, Hornchurch, Greater London RM12 6JU

01708 922837

sales@chalkstreet.co.uk

https://chalkstreet.co.uk/